



community *Transportation*
dialogue series



Traffic Relief Pilot Program

October 20, 2018



Sponsored by



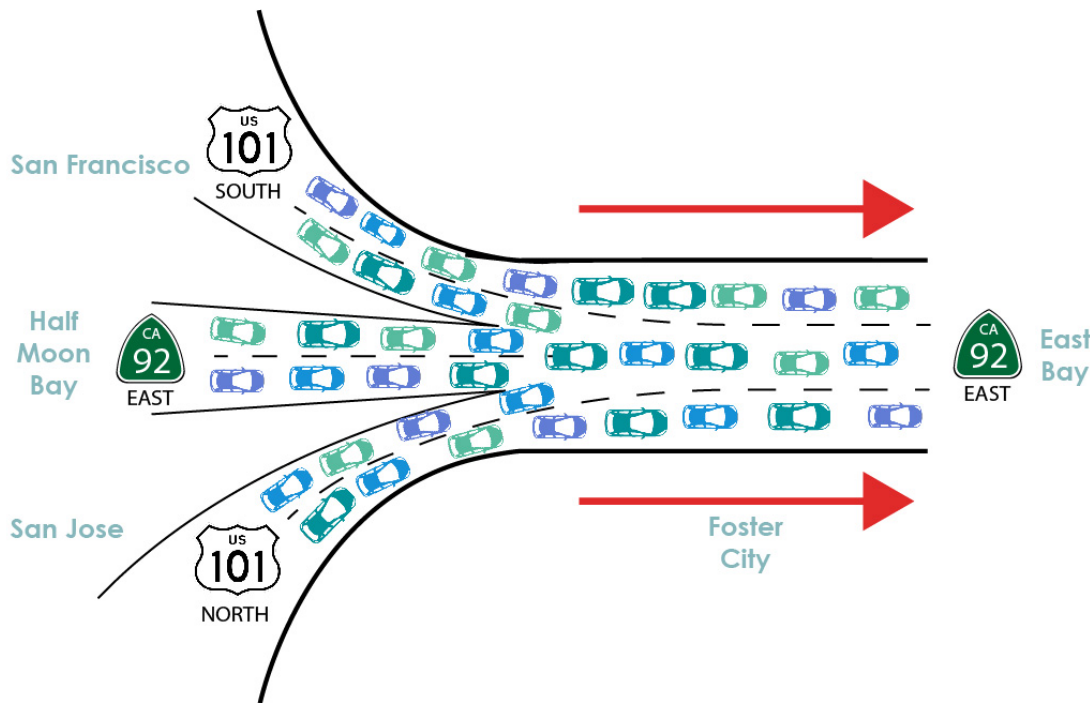


AGENDA

- I. Mayor & Vice Mayor Opening Remarks and Goals for Today
- II. Mobility Challenge & 92 Corridor Alliance Update
- III. Traffic Improvements in Progress
- IV. Traffic Relief Pilot Program
- V. Post-it Party
- VI. Questions and Answers



MAYOR & VICE MAYOR OPENING REMARKS



- Regional traffic on Highways 101 & 92 due to strong economy
- Councilmembers hear your concern and want action wherever possible
- City Council has authorized various traffic improvements to be presented by staff

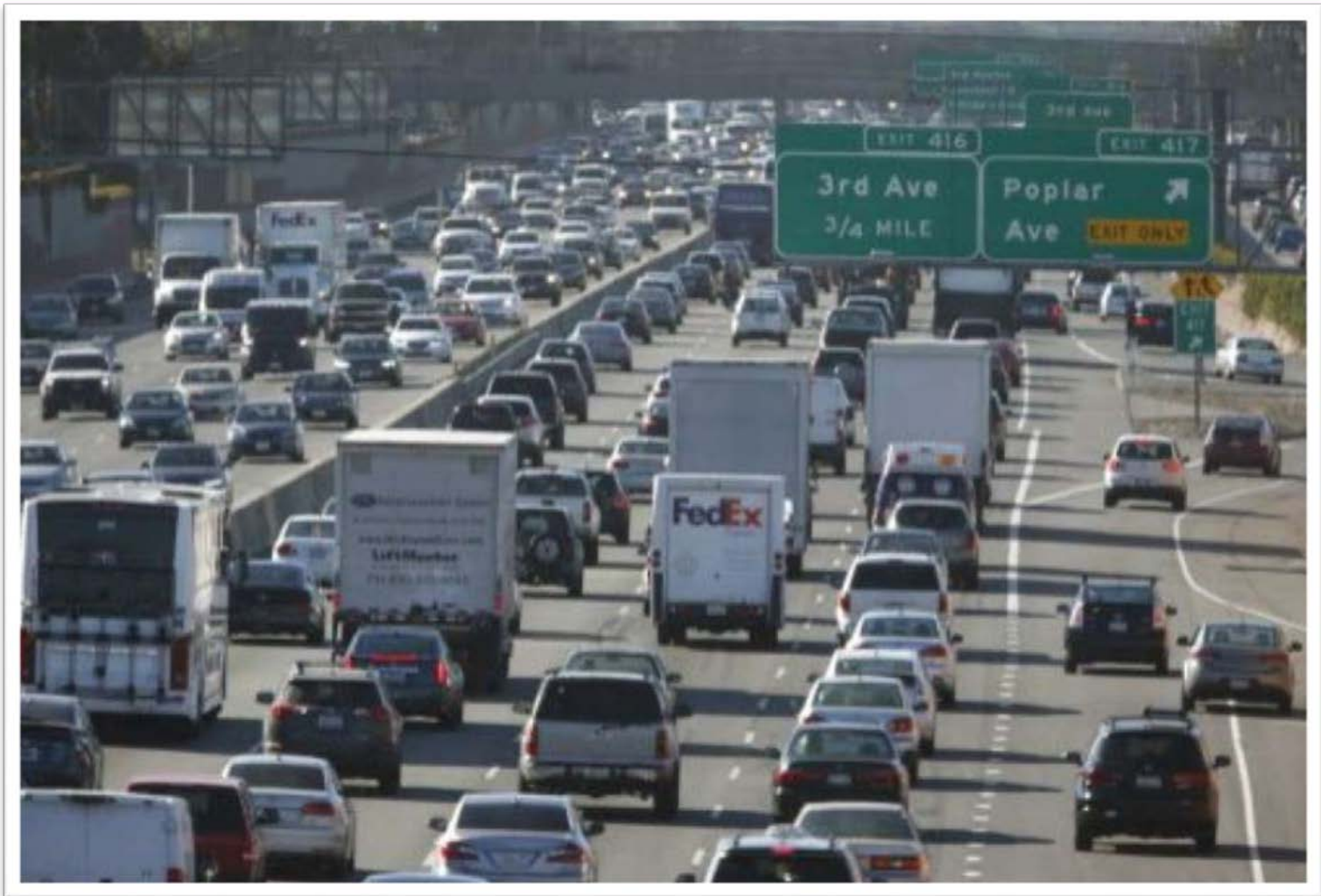


GOALS FOR TODAY

- 1. Inform** – Overview of our identified Transportation Projects
- 2. Engage** – Conversation about other transportation/traffic ideas
- 3. Involve** – Enlist your help in identifying the best solutions for FC



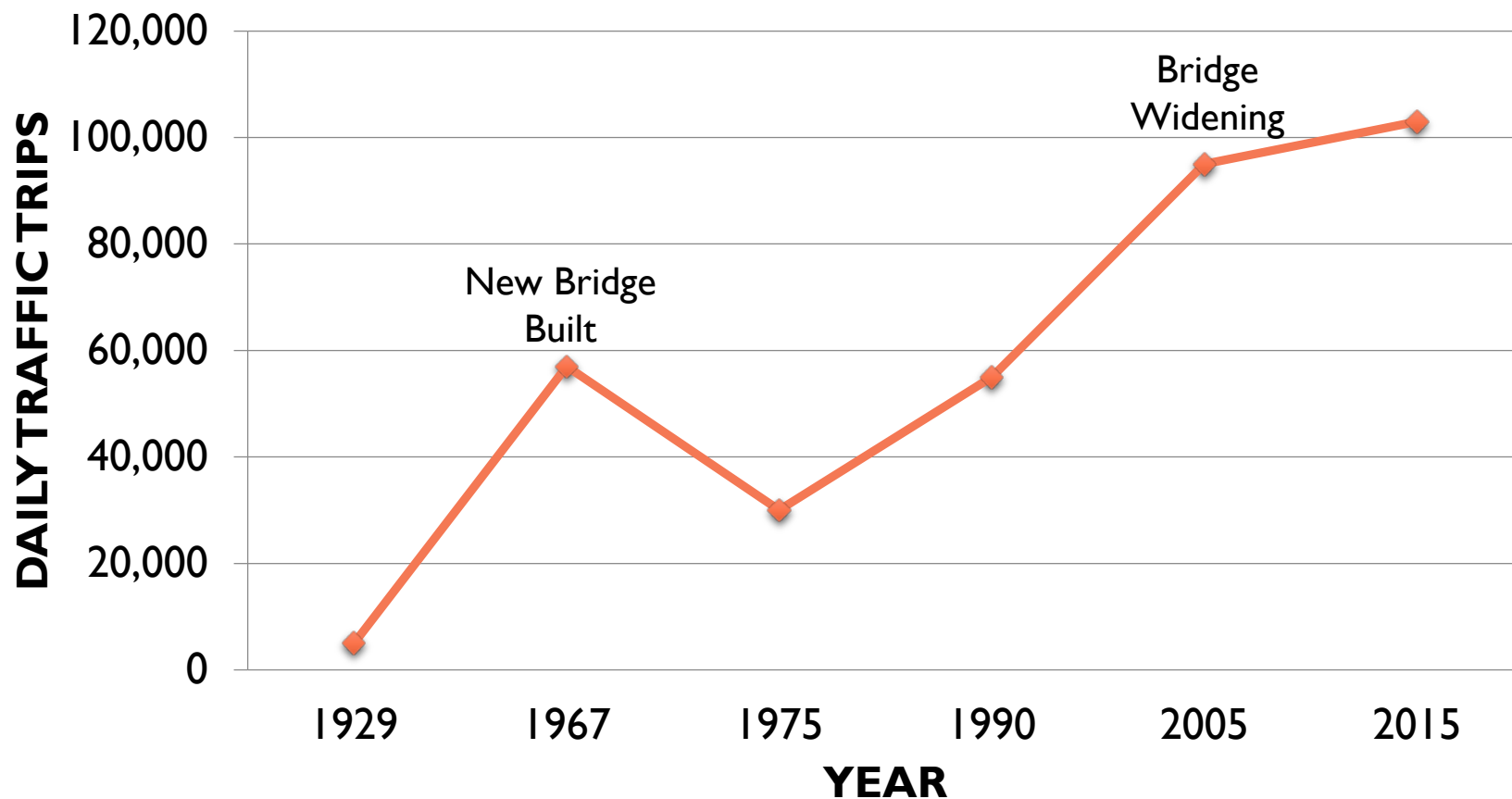
We are all stuck in traffic. We all need to work together.





SAN MATEO-HAYWARD BRIDGE TRIPS

(Source: Caltrans Traffic Volume Data)





THERE IS NO ONE SOLUTION



Cars



Rail



Bus Service



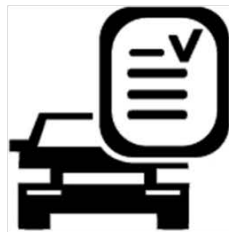
Shuttle Service



**Special Needs
Transit**



Rideshare



**On-Demand
Service**



Biking



Walking



**Water Taxi /
Ferry**



What Can We Do to Help Ourselves?

TRAFFIC INITIATIVES & STRATEGIES

Traffic Improvements Required by Development

Highway 101 Southbound to Fashion Island

Fashion Island Boulevard Eastbound Red Curb Request

Metro Center Boulevard to Eastbound State Route 92 On-Ramp

Belmont Slough Bike Path

New Traffic Signals Installations

Bicycle Master Plan & Improvements

Neighborhood Cut-through Traffic Relief Projects

Bike & Scooter Share Programs

Water Taxi Feasibility Study

Commuter Engagement & Incentive Programs

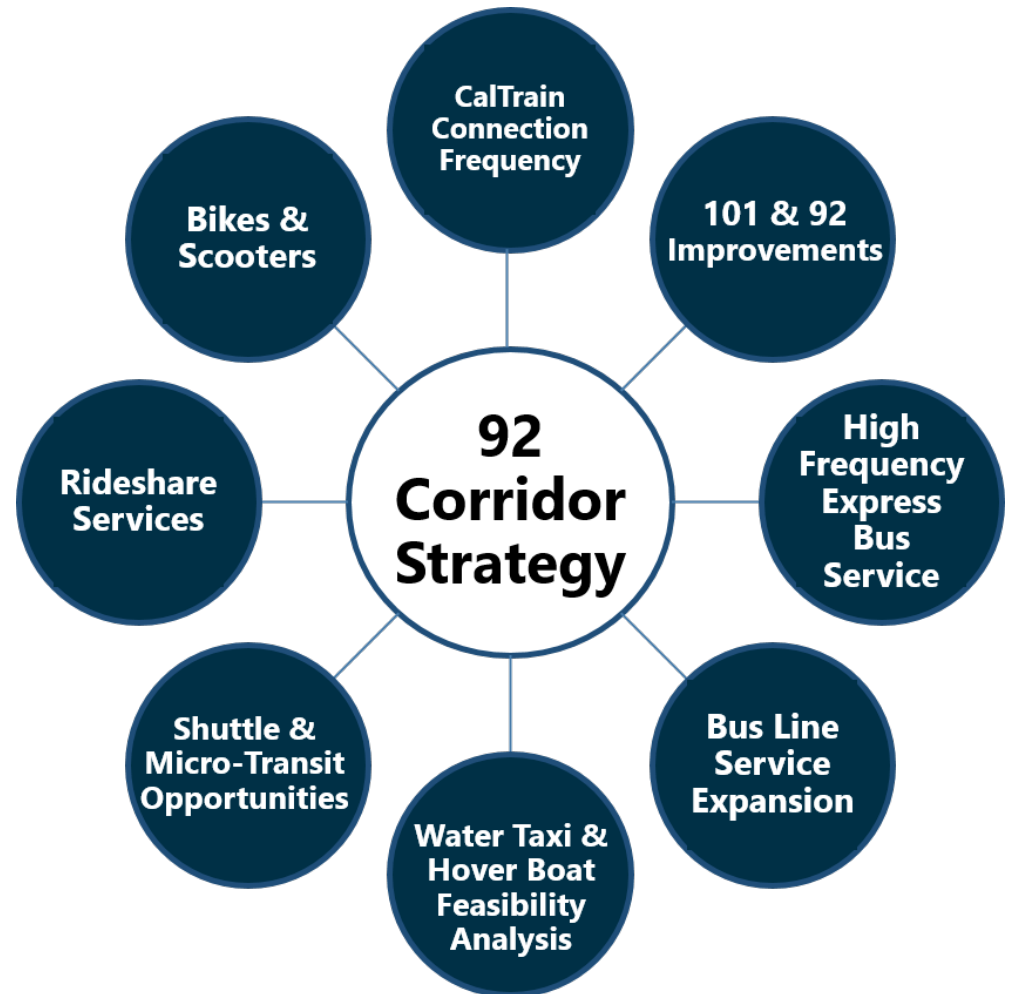
92 Corridor Alliance



92 CORRIDOR ALLIANCE UPDATE



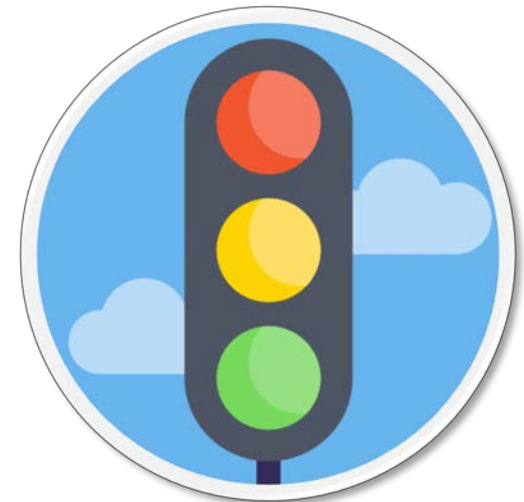
The 92 Corridor Alliance is a **localized coalition** of the Cities of Foster City & San Mateo, major employers, public agencies, non-profits, and community leaders working together to improve connectivity between multiple transportation modes along the 92 Corridor between Highway 280 in San Mateo and the Hayward Bart Station.





TRAFFIC IMPROVEMENTS IN PROGRESS

- Multi-traffic improvements due to development
- Highway 101 Southbound to Fashion Island Boulevard
- Fashion Island Boulevard Eastbound Red Curb Request
- Metro Center Boulevard to Eastbound State Route 92 On-Ramp (Through Right)
- Traffic Signals (4 Signal Installations)
 - Beach Park Boulevard/Shell Boulevard
 - Beach Park Boulevard/Gull Avenue
 - Foster City Boulevard/Polynesia Drive
 - Edgewater Boulevard/Port Royal Avenue





BICYCLE & PEDESTRIAN TRANSPORTATION IMPROVEMENTS

- Bike Master Plan
- Beach Park Boulevard Bike Lanes and Sharrows
- East Hillsdale Boulevard Bike Lanes – Grants
 - ✓ TDA - \$400k
 - ✓ Senate Bill I - \$650k
 - ✓ Measure M
 - ✓ Gas Tax
- Belmont Slough Bike Trail Improvement – Foster City Portion with Levee Project



101/92 HIGHWAY GRANT

To improve traffic flow, safety, and mobility through the 101/92 interchange area ...

- 101 Southbound to Fashion Island Boulevard
- 101 Northbound East Hillsdale Boulevard Off-Ramp
- 101 Southbound to 92 Eastbound Suicide Lane
- 101 Northbound to 92 Eastbound Suicide Lane
- 92 Westbound to 101 Southbound Capacity Improvement



TRAFFIC RELIEF PILOT PROGRAM

Proposal –

- No Left Turns from East Hillsdale Boulevard onto Edgewater Boulevard and Shell Boulevard
- 3-Month Duration, During 4PM to 7PM Evening Commute Peak Hour
- City Manager can terminate at any time if deemed unsafe

Prior to Implementation –

- Navigation apps such as Waze, Apple, Google, Equinex, and others to be notified
- Portable message board signs to be placed in eastbound direction

Fiscal Impact –

- Public Works staff to remove portable delineators each day at 7PM

EAST BAY



SAN FRANCISCO



SAN JOSE



EDGEWATER BLVD

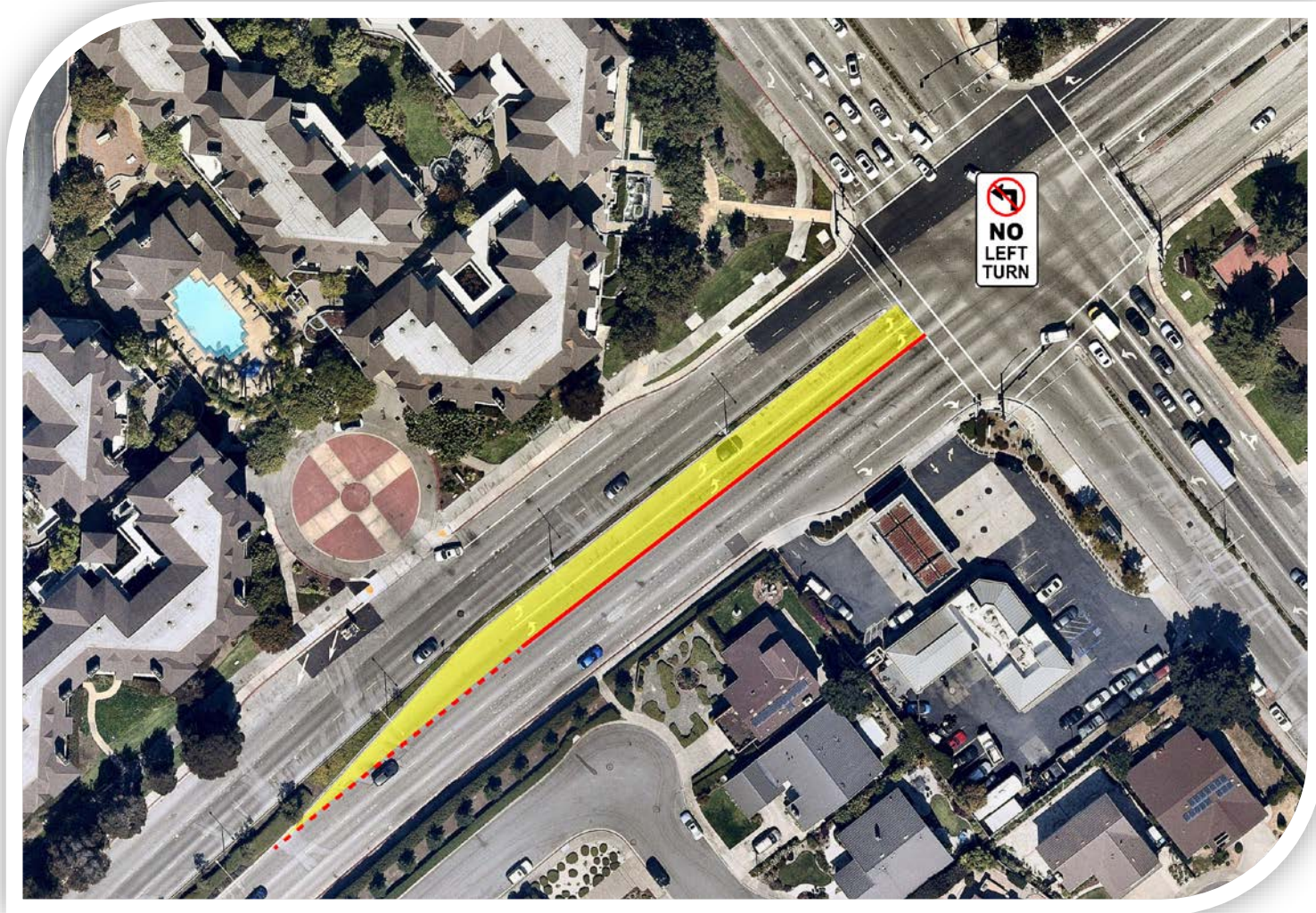
E HILLSDALE BLVD

SHELL BLVD

FOSTER CITY BLVD

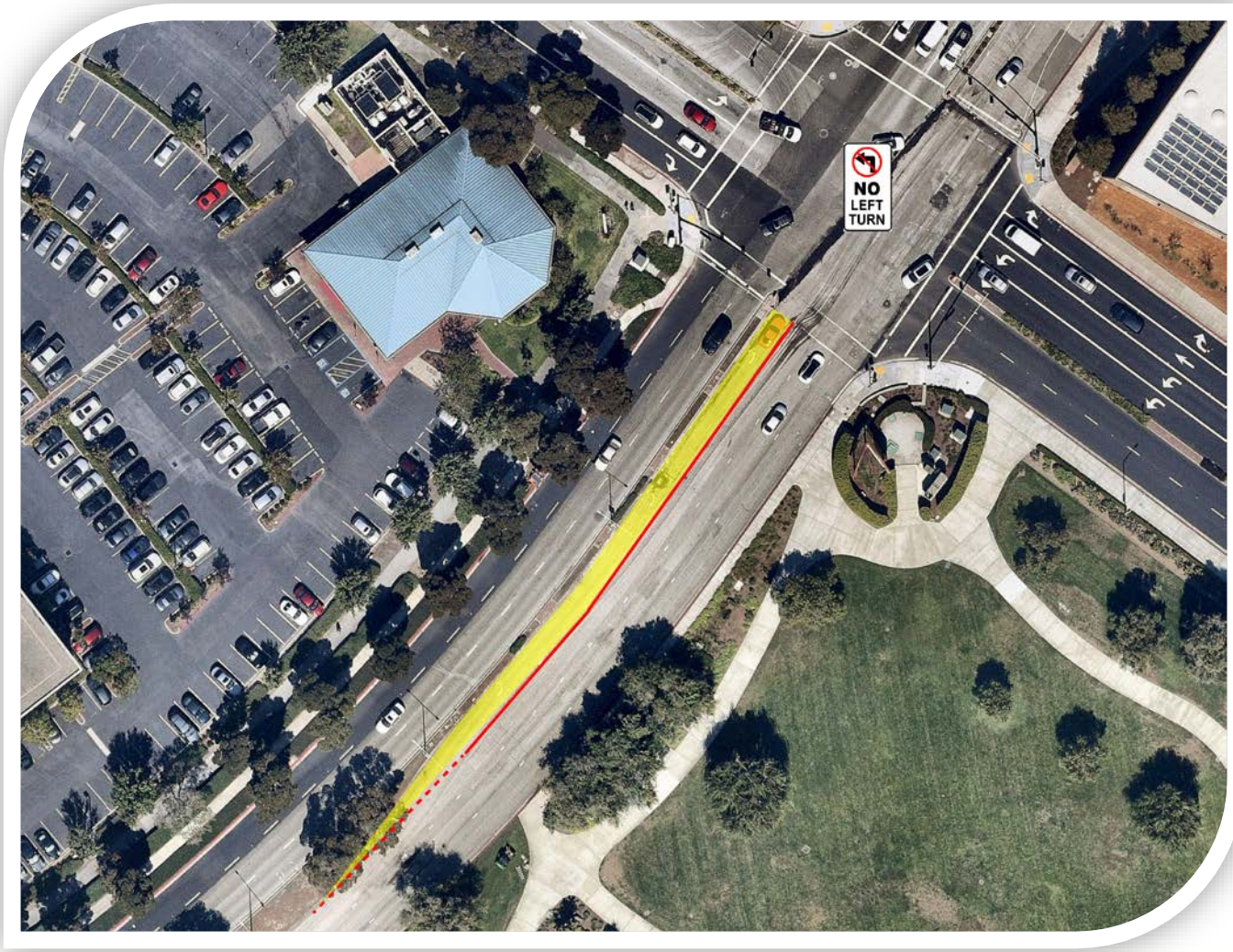


AERIAL VIEW OF INTERSECTION *E. Hillsdale & Edgewater Boulevards*



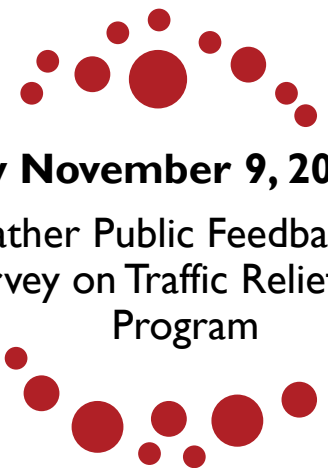


AERIAL VIEW OF INTERSECTION *E. Hillsdale & Shell Boulevards*

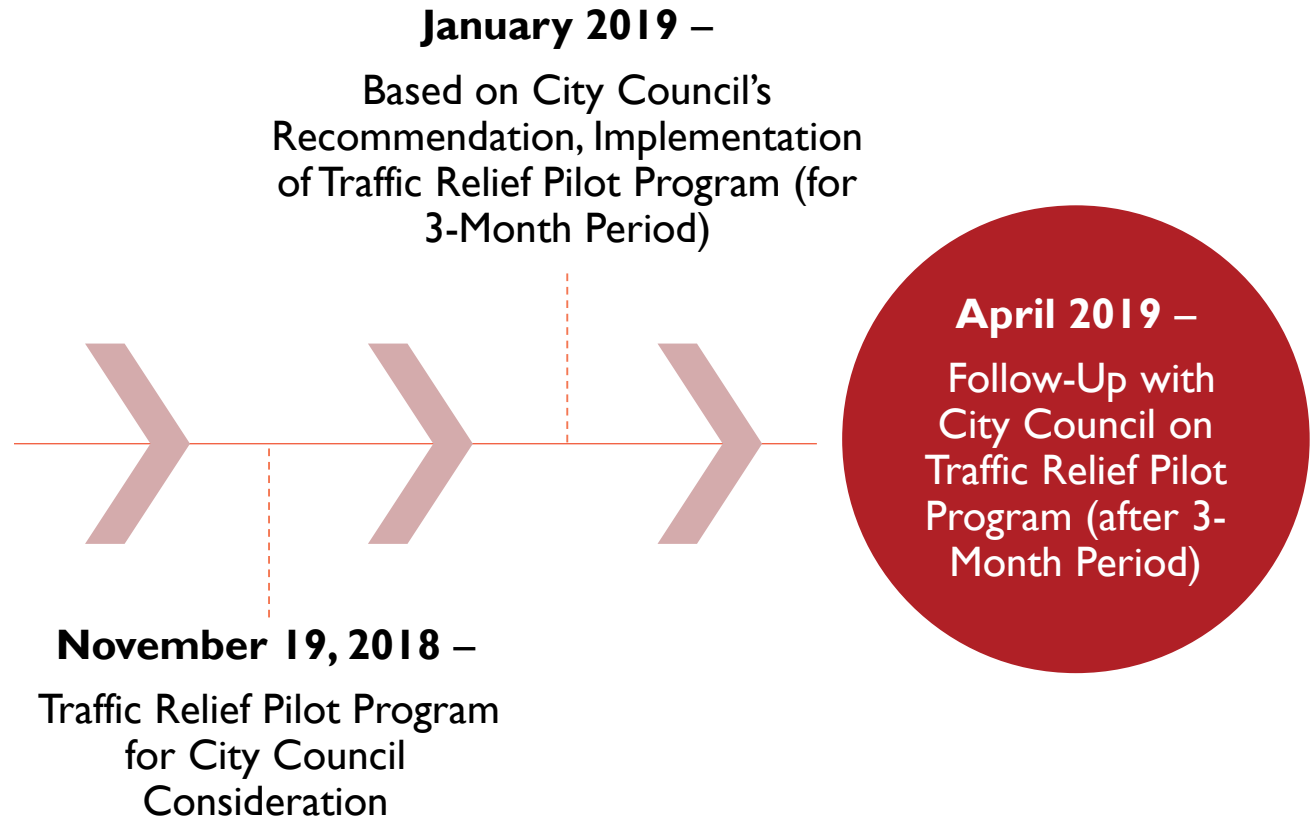




NEXT STEPS



By November 9, 2018 –
Gather Public Feedback via
Survey on Traffic Relief Pilot
Program



Post It Party!





Questions & Answers

Thank you for attending!

Visit sustainable.fostercity.org/cds2018
to take our online survey by **November 9,
2018** and have your voice be heard!

Additional resources will be available online, including:

- Presentation
 - [Video](#)
 - Handouts
-

